



R. Brandon



Z. Chueke



J. Weber



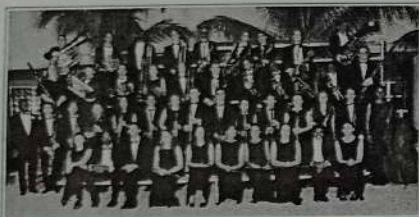
V. Yedra



B. Chruszcz



N. Crnjanski
Y. Nakamura



NWSA Wind Ensemble

Beginning promptly at 3:00 PM,
concerts in the

Notes, Strokes & Movement - 2001 Series
will offer the audience an opportunity
to ask the musicians questions
before the program concludes at 4:00 PM.

Although we are not selling tickets for
these concerts, we are grateful for any
donations to help defray the costs
of the production.

Checks should be written to
Lowe Art Museum.

Non-Profit Org.
U.S. Postage
PAID
Miami, FL
Permit 2199

LOWE ART MUSEUM
UNIVERSITY OF MIAMI
1301 STANFORD DRIVE, CORAL GABLES, FL 33124-6310

*Notes, Strokes
& Movement*

*Notes,
Strokes &
Movement*

PERFORMANCE
SERIES
2001

ARTISTIC DIRECTOR
ZELIA CHUEKE

 **LOWE ART MUSEUM**
UNIVERSITY OF MIAMI
1301 STANFORD DRIVE, CORAL GABLES, FL 33124-6310

The Lowe Art Museum
is pleased to present

Notes, Strokes & Movement

A unique series of performances, under the artistic direction of Dr. Zelia Chueke, M.M., Mannes College of Music, New York, and Doctor of Musical Arts, University of Miami.

Notes, Strokes and Movement is a dynamic conjunction of expressive mediums – music and the visual arts – through a collaboration among artists from different cultures and disciplines.


It is our intent – through these four enchanting concerts – to convey a sense of art's unique ability to communicate universally, regardless of the medium, culture, or era.

The series is made possible with generous support from the City of Coral Gables, The Institute of Museum and Library Services, Hale Piano Inc., University of Miami School of Music, and the French Consulate. We especially thank the artistic director, Zelia Chueke, for her resourcefulness in bringing this magic to the Lowe.

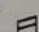


Lowe Art Museum exhibitions and programs are sponsored in part by The State of Florida, Division of Cultural Affairs and the Florida Arts Council; The Institute of Museum and Library Services; and with the support of the Miami-Dade County Department of Cultural Affairs, the Cultural Affairs Council, the Mayor and the Miami-Dade County Board of County Commissioners.


THE SERIES

Sunday, January 21, 2001, at 3 PM 


♪ The opening concert for the Czech Festival of the Florida Grand Opera is being performed in connection with the Opera's production of *Kátya Kabanová* by Leos Janáček. The festival will continue through February 24 with events taking place in all major museums and cultural venues in Miami-Dade and Broward Counties. Featuring: major works by Janáček – Sonata for violin and piano, *Mladi* (Youth) for woodwind sextet and *Capriccio* for piano (left hand) and brass ensemble, performed by The Wind Ensemble and Faculty of the New World School of the Arts conducted by Rodester Brandon, guest violinist Jonathan Weber, from the Aaron Copland School of Music at Queens College (C.U.N.Y.), and pianist Zelia Chueke.

Sunday, February 4, 2001, at 3 PM 

♪ Enjoy an afternoon of Cuban Classical Music with pianist Velia Yedra and violinist Bogdan Chruszcz. Mr. Chruszcz is the Founding Concertmaster of the Florida Philharmonic. His distinguished career includes major North and South American orchestras, under the baton of great names such as Aaron Copland and Leonard Bernstein. The duo formed with his wife, Cuban-American pianist Velia Yedra, has concertized extensively with great public acclaim. Mrs. Yedra's performances have been considered by the New York Times as "vibrant and spotlessly clean," praising her "impressive precision" and "authority." As pianist, author, and lecturer, Mrs. Yedra is devoted to the promotion of the music of Spain and the Americas. Her first book about Cuban composer Julian Orbon has been published by the University of Miami's School of International Studies.

Sunday, March 4, 2001, at 3 PM 

♪ French Baroque Duo Nicolas Crnjanski, baroque cello, and Yoko Nakamura, harpsichord, are coming from Paris especially for the event. The duo is part of the French Baroque Ensemble "Les Chants-Meslés," renowned for their interpretation of Baroque French music. Ms. Nakamura studied harpsichord and continuo with Kenneth Weiss at the Paris Conservatory, where she presently teaches. She is known for her interpretations of French harpsichord repertoire and is considered one of the best harpsichordists in Europe. Mrs. Crnjanski studied with Xavier Gagnepain, David Simpson, and Kenneth Weiss, and obtained a B.A. in Musicology at the University of Paris. She is a founding member of four outstanding baroque ensembles in Europe – "Les Chants Meslés," "Ensemble Baroque of Toulouse," "Corelli," and "Quaturo LODI."

Sunday, April 29, 2001, at 3 PM 

♪ The Chinese Classical ensemble aims at promoting Chinese culture and music. The members of the ensemble have received rigorous training in music since primary school, providing them with a solid foundation for a high standard at each of their performances. The repertoire of the ensemble covers a wide spectrum, ranging from traditional Chinese music to newly composed and arranged works. The musicians and their instruments are: Kay Lin and Pei-Ju Wang, the erhu; Yu-Mei Huang, the liuqin; Lisa Donald, cello; Raymond Lim, the bamboo flute. They are accompanied by Ariel Liu, pianist.

The Lowe Art Museum
is pleased to present

Notes, Strokes & Movement

A unique series of performances, under the artistic direction of Dr. Zelia Chueke

CHINESE CLASSICAL ENSEMBLE

**Kay Lin and Pei-Ju Wang, the erhus; Yu-Mei Huang, the liuqin; Lisa Donald, cello;
Raymond Lim, the bamboo flute; and Ariel Liu, Piano.**

Sunday, April 29, 2001, at 3 p.m.

RSVP (305) 284-5587 - seating is limited

The Chinese Classical ensemble aims to promote Chinese culture and music. The ensemble covers a wide spectrum, ranging from traditional music to newly composed and arranged works.

The concert is free with museum admission

This series is made possible with generous support from the City of Coral Gables, The Institute for Museum and Library Services, Hale Piano, Inc., University of Miami School of Music, and the French Consulate.